

Regenerative & Positive Impact Circular Economy

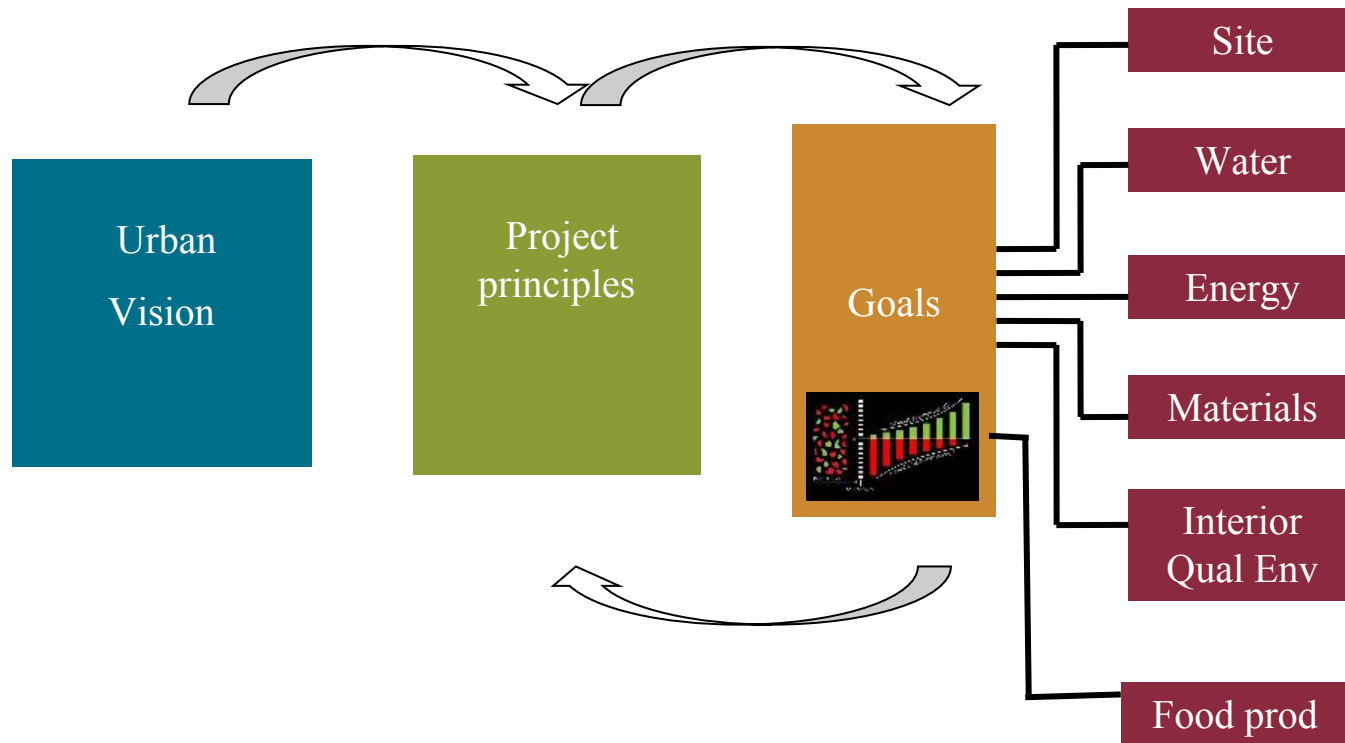
Technologies avancées et agriculture urbaine

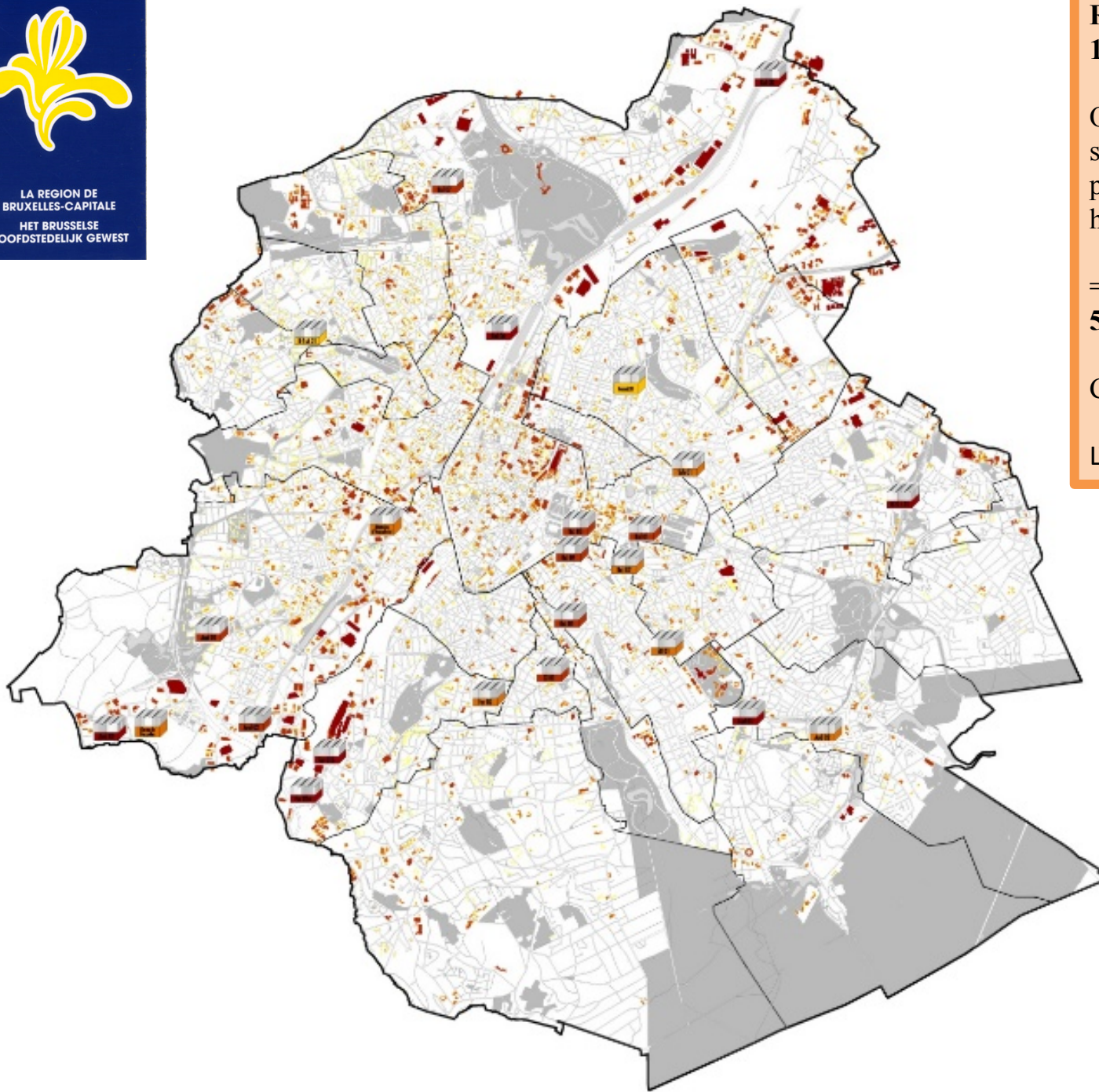
Steven Beckers

FFUE



Beyond Sustainability





RBC Territory=
162.447.439m²

Office, Industry, parkings,
school, hospital, other
programs (without
housing)

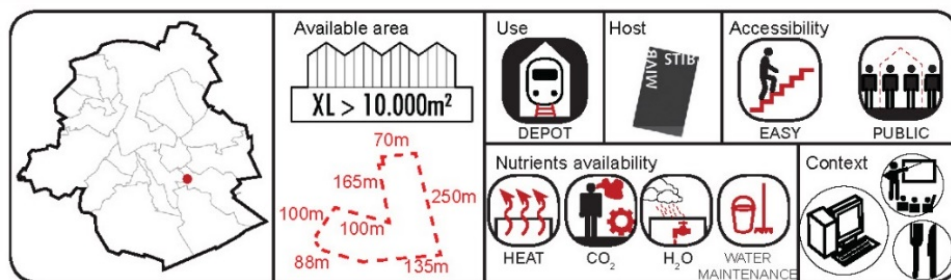
= 4377 flat roofs
5.906.888m²

Categories: **XL, L, M, S**

LTF 2013



KNOW WHAT YOU HAVE

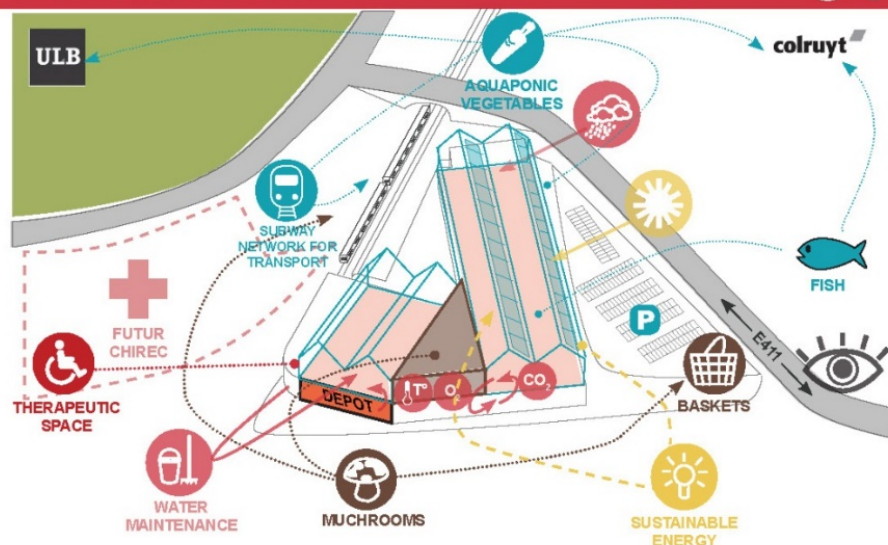


Available area 3,4 Ha (34.000 sqm²) the whole roof area is available. Not currently accessible.

Building use and structure STIB bus depot, maintenance and cleaning. The rooftop is accessible from adjacent space and new access seems easy to create. Structure has not been studied and needs an in depth technical survey.

Context Located in a mixed use neighborhood with offices, housing and production activities. Some restaurants, no retail. High visibility from the E411 Highway. Close to the ULB and VUB sites, European School and the new CHIREC Hospital (in construction).

Nutrients availability Potential use of Heat and water coming from the building behind, explore potential use of the Subway Network for night goods transport, potential to use nutrients coming from the future hospital (to be defined). Check heat production from electrical transformer.



KNOW WHAT YOU WANT

The Delta bus depot being one of the large of the city with a beautiful rooftop, STIB wants to start growing vegetables to use all the resources from its facility (water, heat and CO₂) and improve building's performances by generating added value from waste management. Well located near the E411 highway and the subway, STIB will have different possibilities to move production, by trucks, light transport or subway, depending of where we will deliver. Another nice goal will be to create a therapeutic area with CHIREC to help health recovery through gardening.





Social & associations

Rentable par activités événementielle & marketing

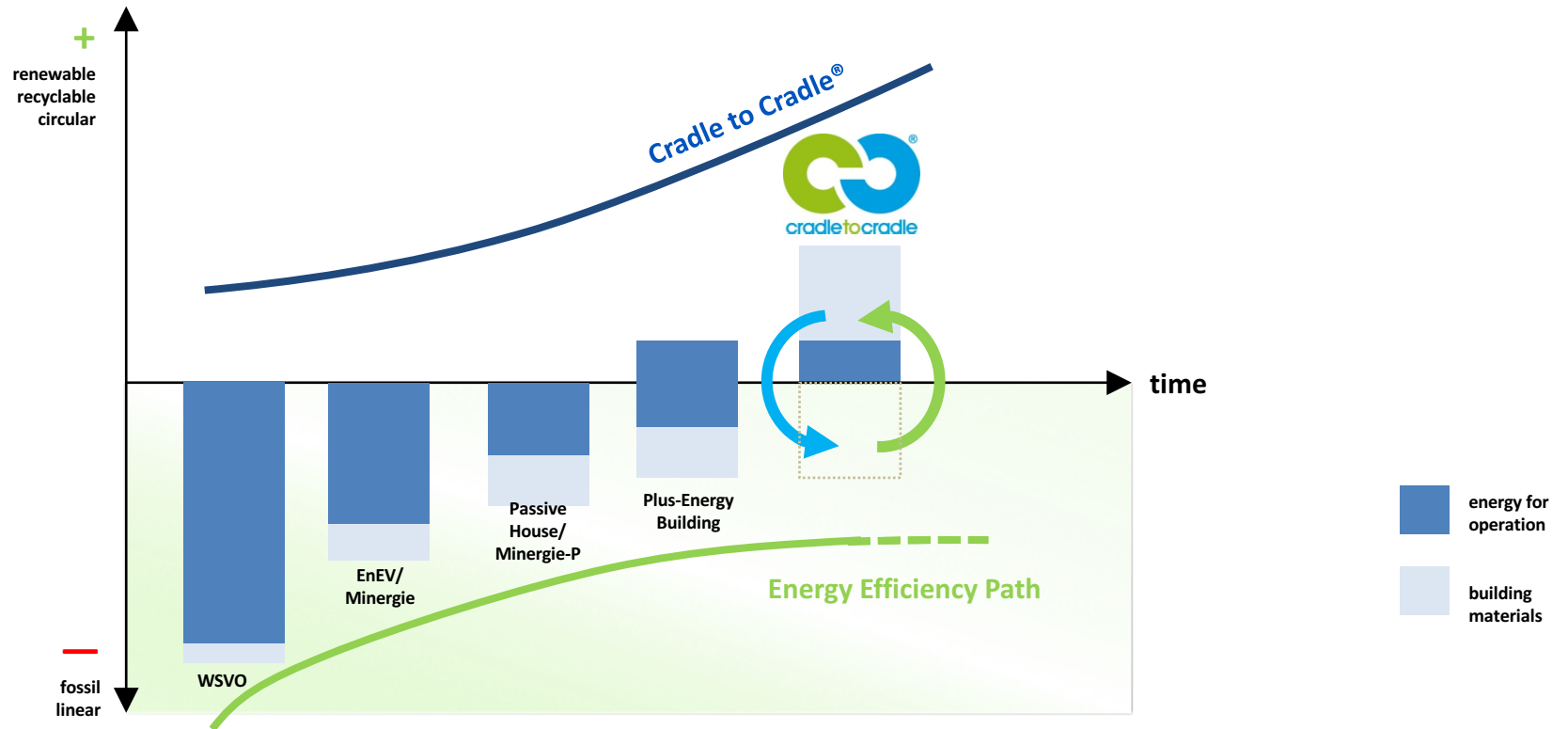
Location d'espace & abonnements

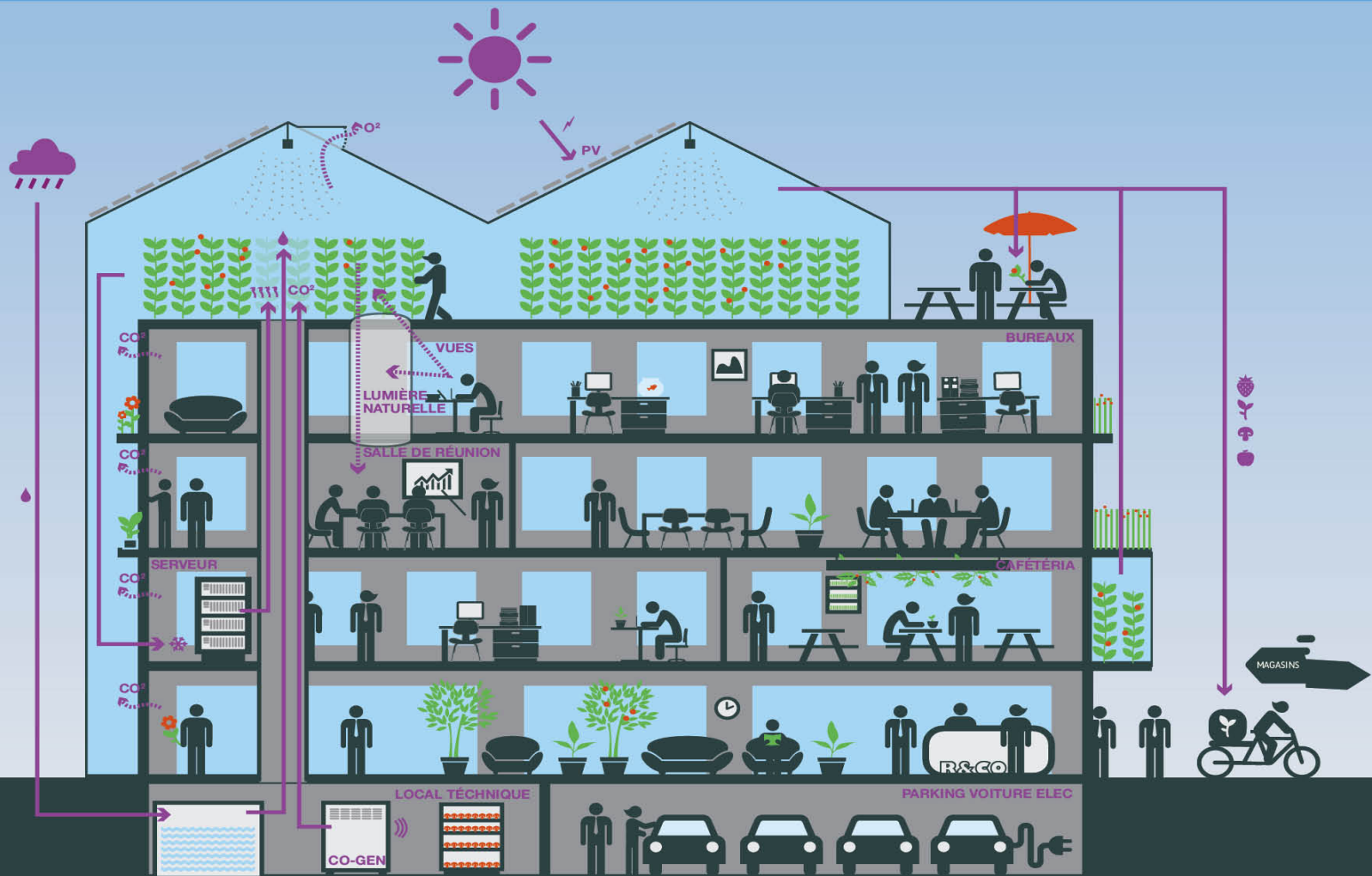


Rentable par vente de produits

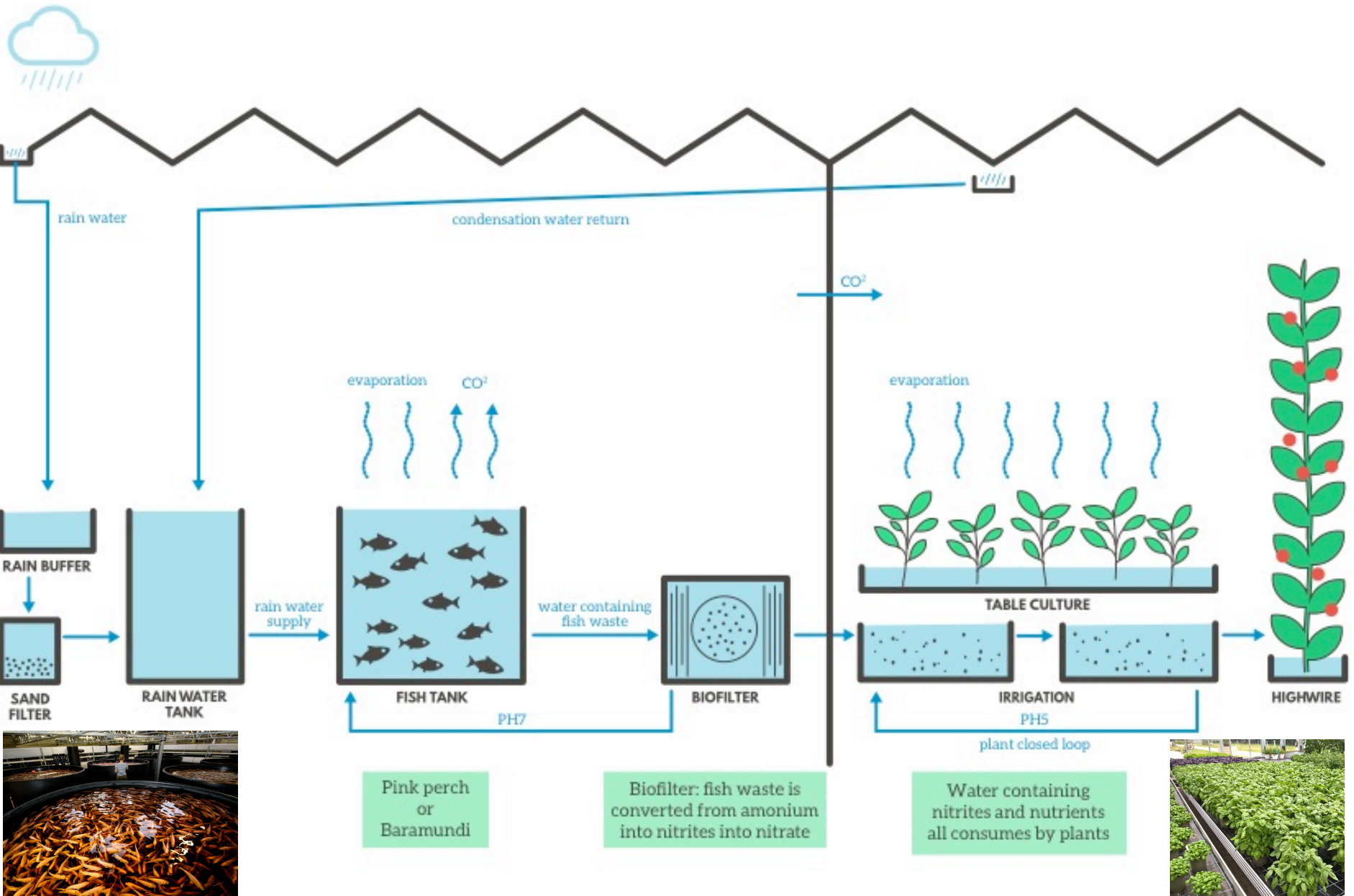


From the efficiency path to Circular Economy





Aquaponic = AQUAculture + hydroPONIC



BIGH Anderlecht











MERCI

SB@bigh.tech